

Welcome

As envisioned in Burnaby's Transportation Plan, Connecting Burnaby, we're improving the current cycling network in the Edmonds Town Centre area.

We are now in Phase 2, which includes cycling improvements along six additional corridors. Together, the Phase 1 and Phase 2 corridors will provide a complete and connected cycling network in the Edmonds Town Centre area.

Phase 2 improvements will be implemented using the same rapid implementation process and construction is expected start in early summer 2024.



What is Rapid Implementation?

Rapid implementation, or “quick build”, involves using low-cost and adjustable materials to construct instant cycling routes within the existing curb-to-curb space. Most quick build projects can be constructed in days or a few weeks.

Phase 1 Summary

Corridors completed in Phase 1 include:

- 15th Street
- Kingsway
- Britton Street
- 16th Avenue
- Mary Avenue
- 18th Street Connector



protected bike lane



neighbourhood bikeway

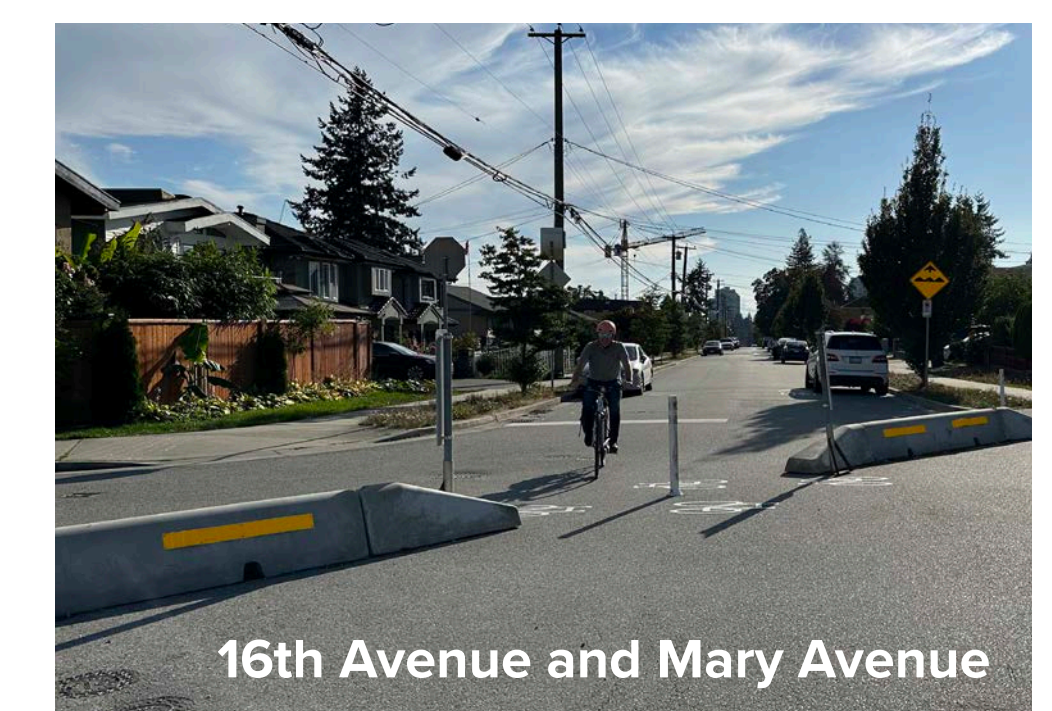


multi-use pathway

What We Heard

Over the summer 2023, the project team received community feedback regarding the Phase 1 cycling corridor improvements.

- Improved connectivity to the Edmonds SkyTrain Station, commercial/retail destinations, parks and trails, and adjacent neighbourhoods.
- Additional traffic and speed management measures to reduce traffic volumes and speeds.
- Concerns regarding impacts to drivers and local neighbourhood access.
- Additional physical protection and separation between people walking, cycling and driving.
- Traffic volumes are too high on neighbourhood bikeways for cyclists and drivers to share the road.



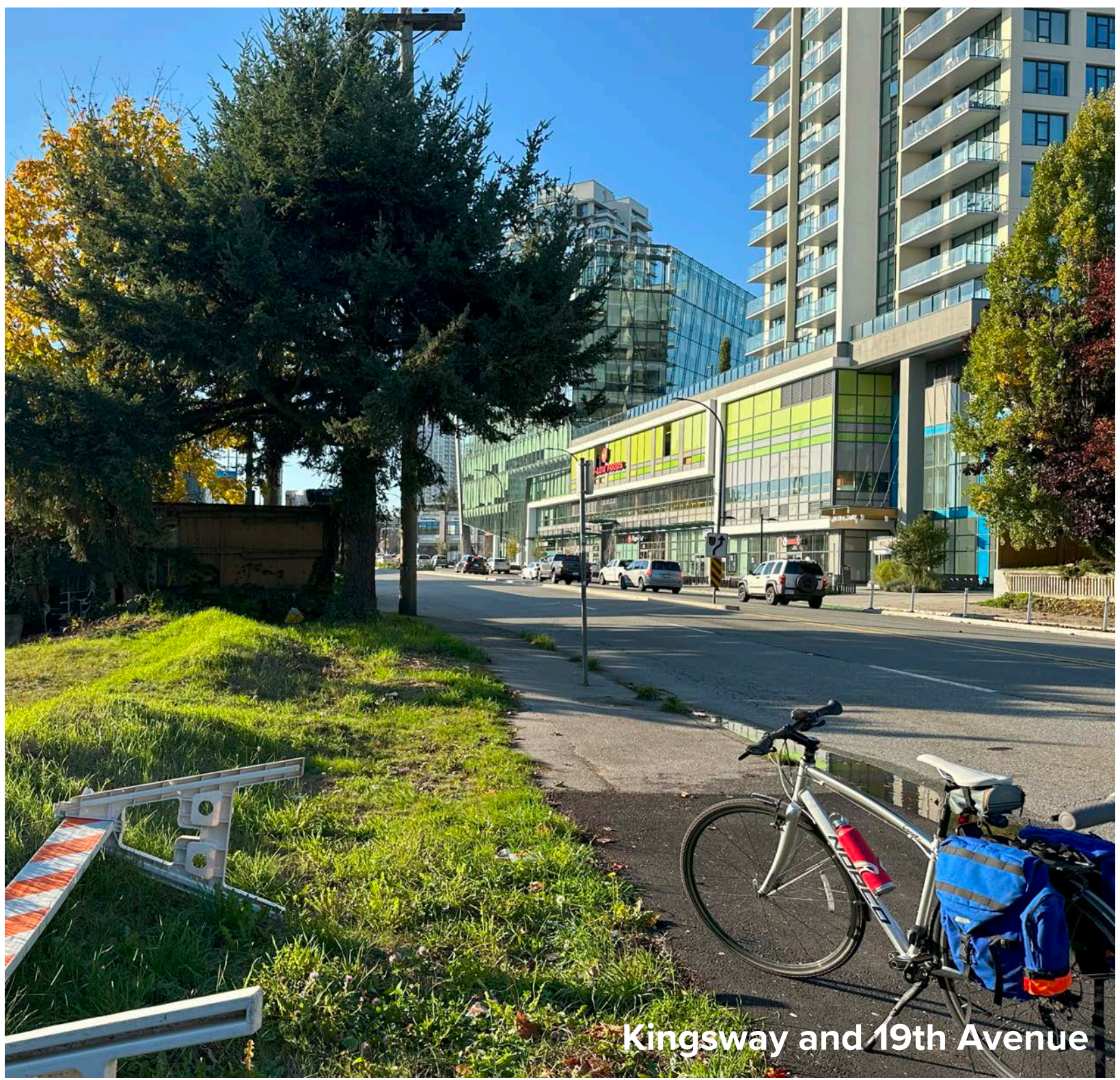
Edmonds Town Centre Cycling Network

Phase 2

Phase 2 Corridors

- 1 Highgate Mall Connection
- 2 18th Avenue
- 3 19th Avenue
- 4 Stride Avenue / Southpoint Drive
- 5 16th Avenue
- 6 Burgess Street

EDMONDS TOWN CENTRE CYCLING NETWORK

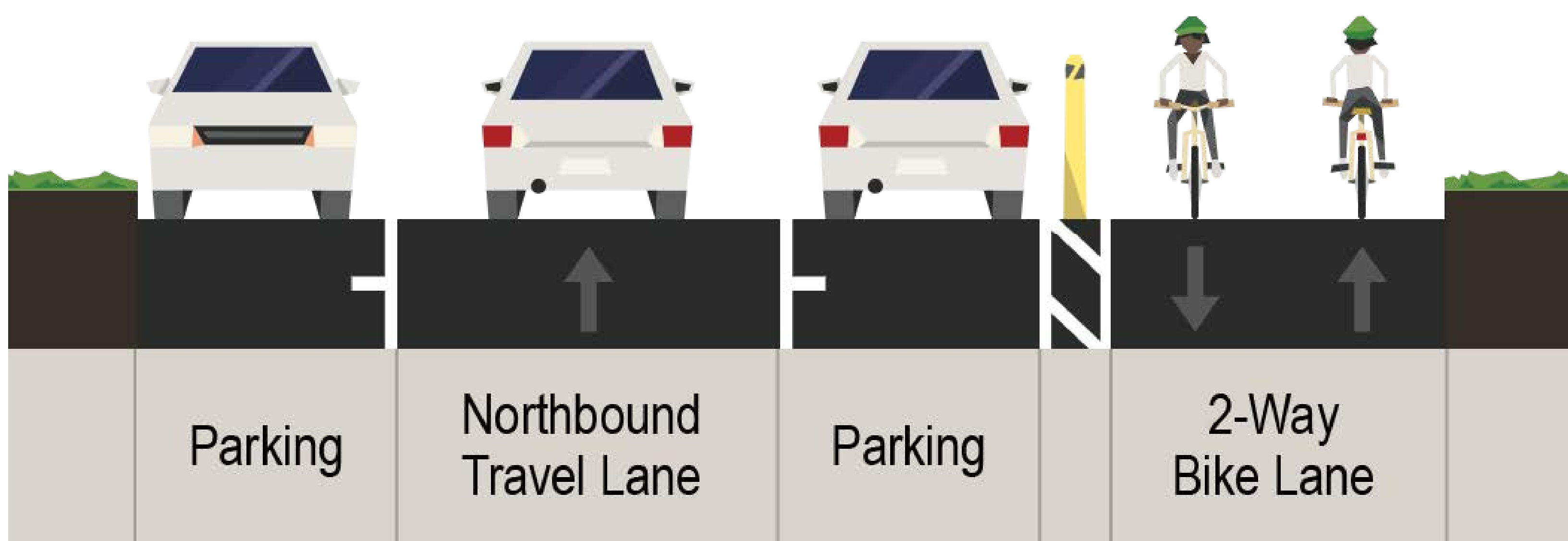


Highgate Mall Cycling Connection

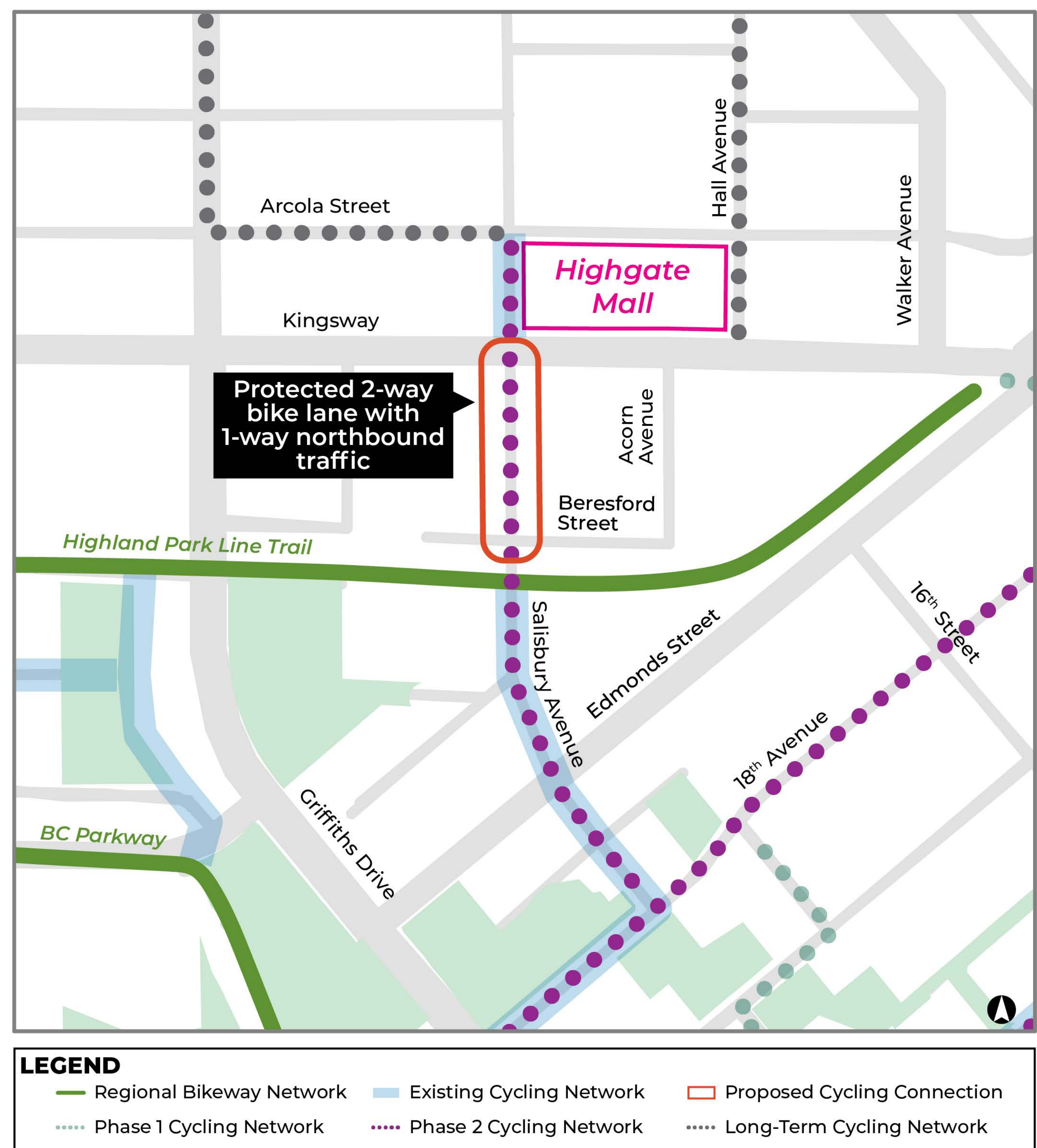
Two design options and corridors are being explored to provide better connectivity with Highgate Mall and to improve crossing safety for cyclists.

Option 1: Salisbury Avenue Cycling Connection

- A protected 2-way bike lane on the east side of Salisbury Avenue between Beresford Street and Kingsway to bridge the gap between the pathways on either end.
- Southbound vehicle traffic will be restricted and diverted to Acorn Avenue, Beresford Street and/or Edmonds Street.
- Curbside parking is retained on both sides of Salisbury Avenue.



HIGHGATE MALL CYCLING CONNECTION - OPTION 1



Highgate Mall Cycling Connection

Option 2: Acorn Avenue Cycling Connection

- Neighbourhood bikeway treatments, such as speed humps, pavement markings and signage will be installed on Beresford Street and Acorn Avenue.
- The existing sidewalk on Kingsway will be converted to a shared pedestrian and cyclist pathway.
- Multi-use crossings will be installed at the intersection of Kingsway and Hall Avenue.
- No impacts to vehicle traffic or curbside parking.

Which option do you prefer for this connection?

Option 1: Salisbury Avenue Cycling Connection

Option 2: Acorn Avenue Cycling Connection

Both options would work

I am not sure

HIGHGATE MALL CYCLING CONNECTION - OPTION 2



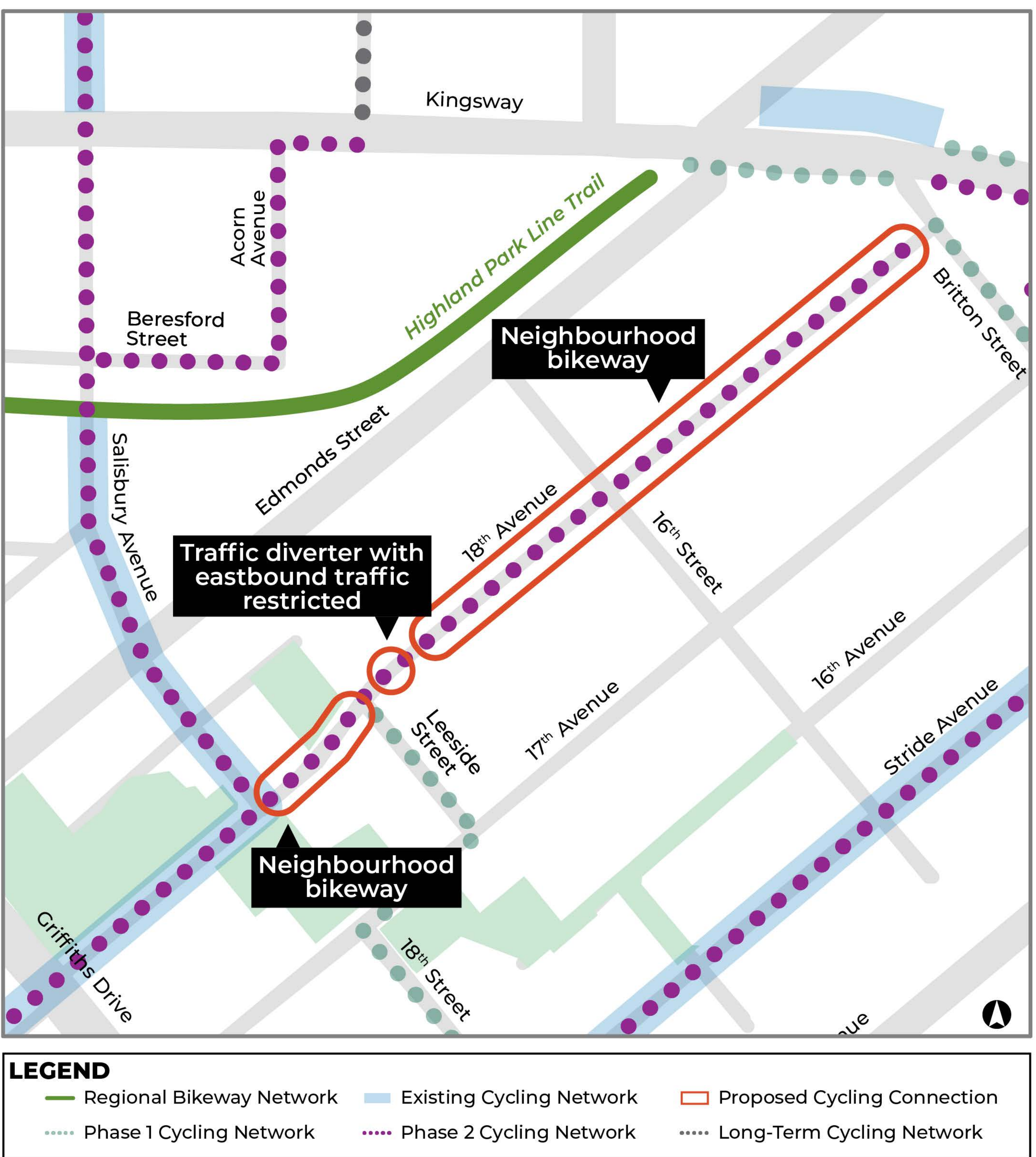
18th Avenue Cycling Connection

This portion of 18th Avenue has higher traffic volumes, which makes it less comfortable for cyclists and drivers to share the road. Two design options are being explored for this corridor.

Option 1: Traffic Diverter with New Public Space

- Eastbound vehicle traffic will be restricted, east of Leaside Street, and diverted to Edmonds Street or 17th Avenue. No impacts to westbound vehicle traffic.
- Existing eastbound traffic will be diverted to Edmonds Street and/or 17th Avenue instead. Motor vehicles travelling westbound would not be impacted.
- 18th Avenue will be improved as a neighbourhood bikeway where cyclists and drivers share the road.
- Landscaping and other amenities will be used to create a community space.
- Minimal impacts to curbside parking.

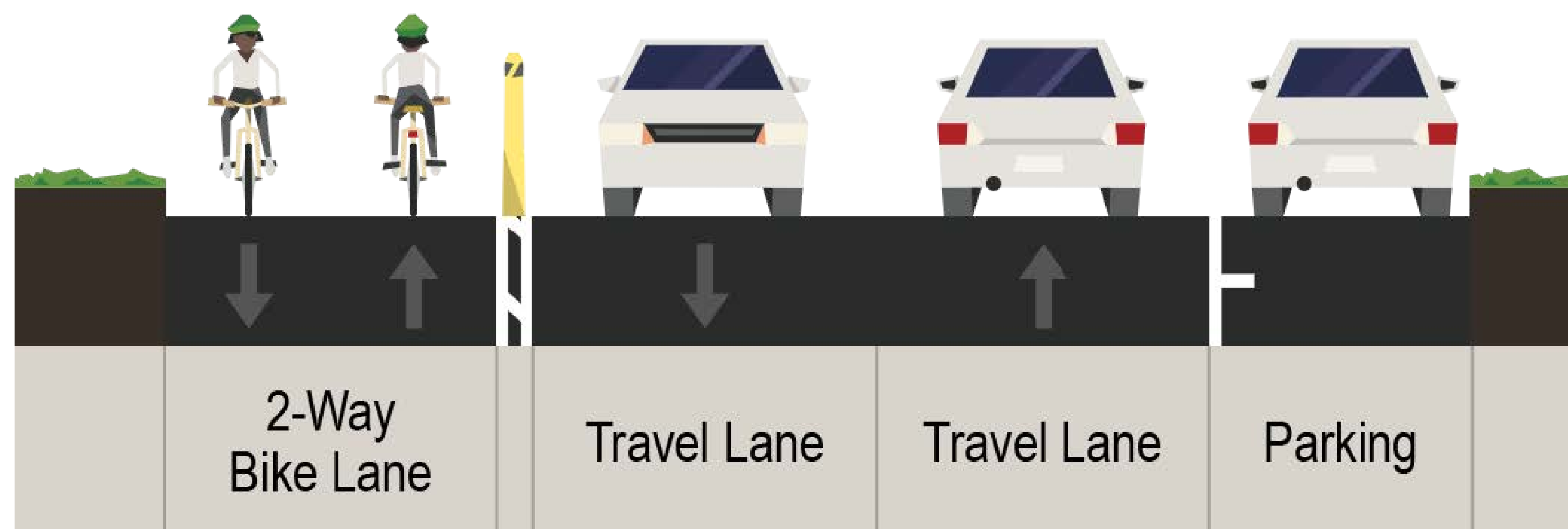
18TH AVENUE CYCLING CONNECTION - OPTION 1



18th Avenue Cycling Connection

Option 2: 2-Way Protected Bike Lane

- A 2-way protected bike lane on the north side of 18th Avenue between 18th Street and 16th Street
- Approximately 18 curbside parking spaces impacted.
- No other impacts to current street operations and movements.



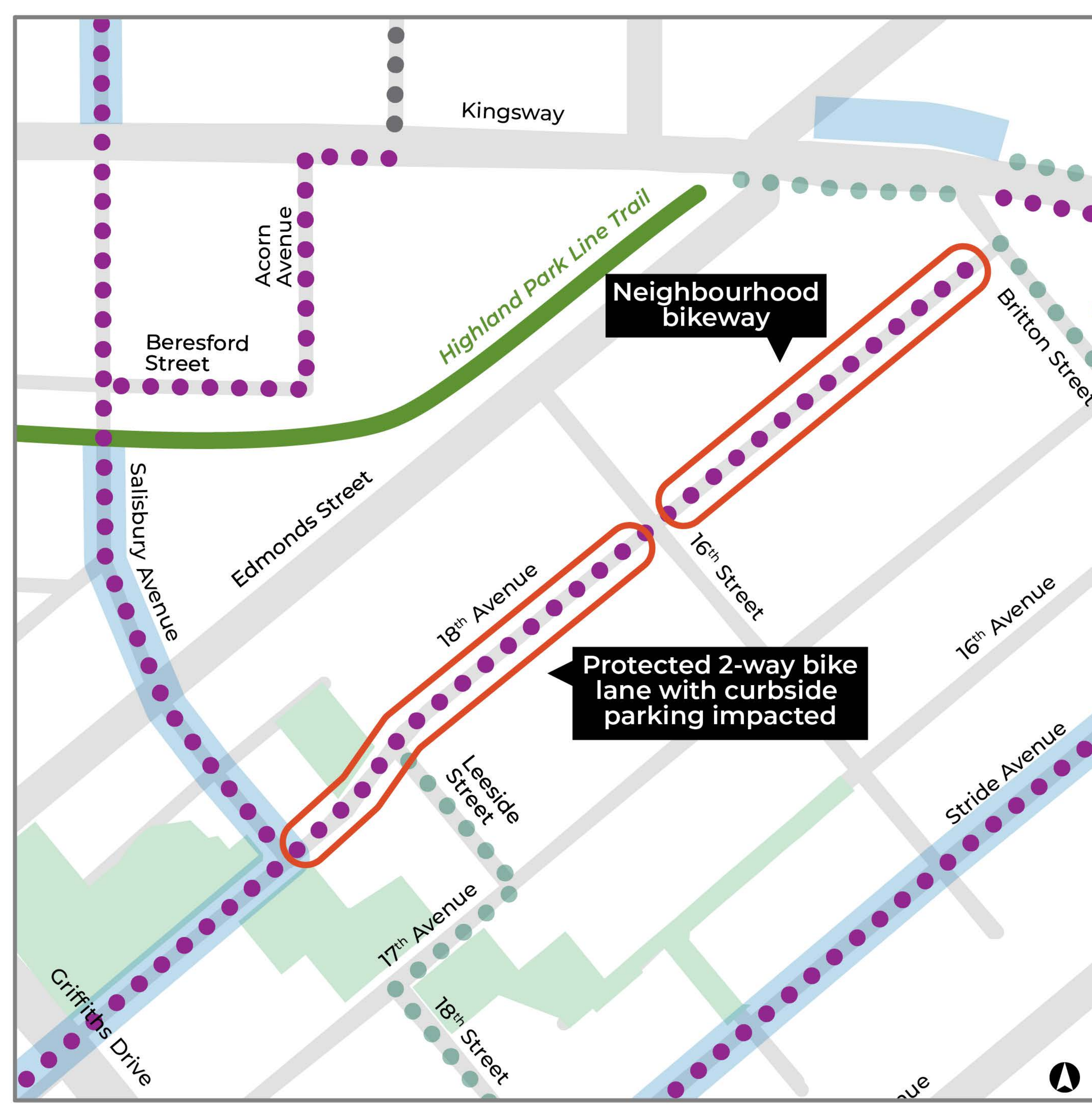
Which option do you prefer for this connection?

Option 1: Modal filter with new public space

Option 2: 2-way protected bike lane

I am not sure

18TH AVENUE CYCLING CONNECTION - OPTION 2

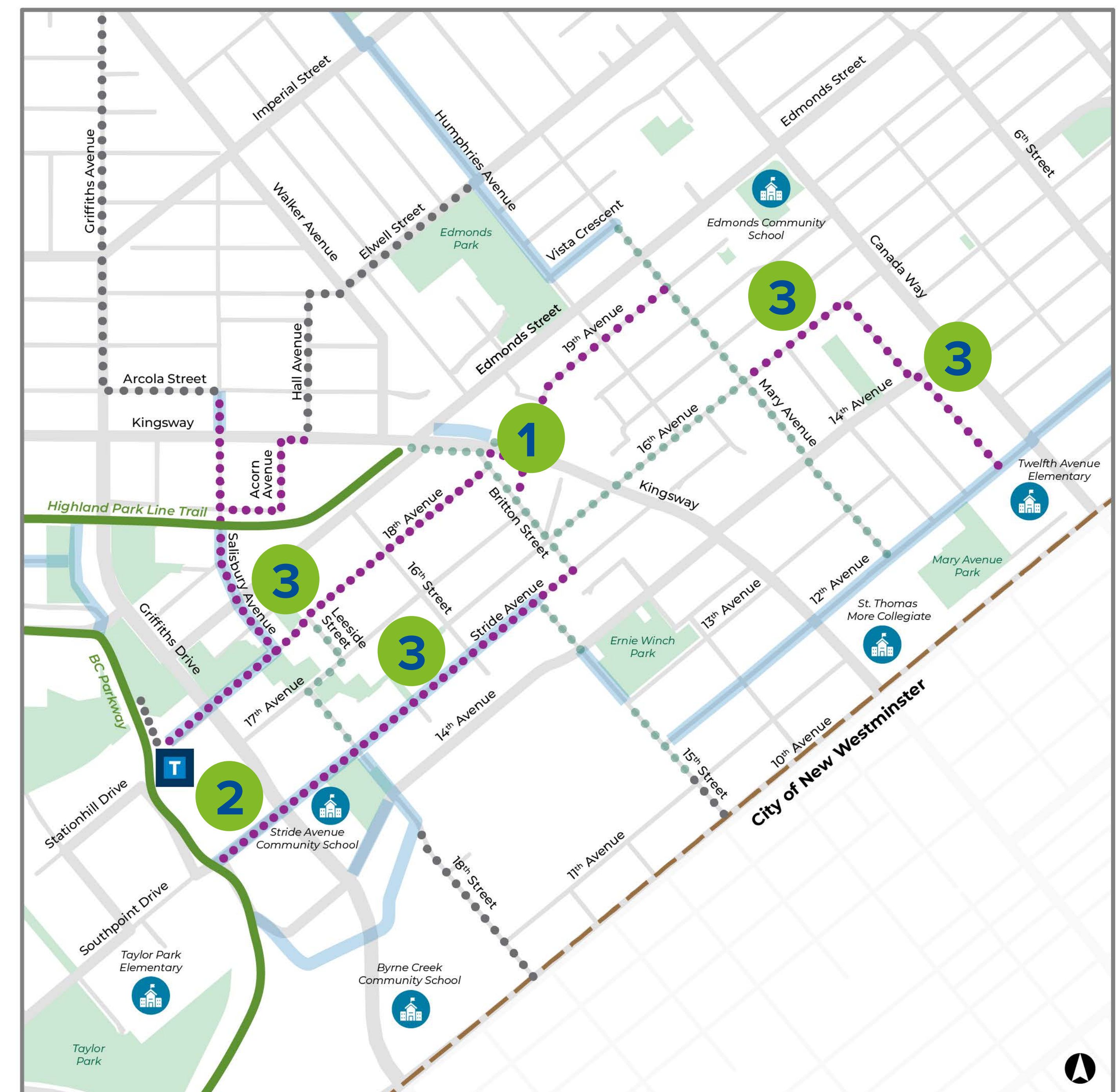


LEGEND		
Regional Bikeway Network	Existing Cycling Network	Proposed Cycling Connection
Phase 1 Cycling Network	Phase 2 Cycling Network	Long-Term Cycling Network

Other Corridor Improvements

- 1** New **multi-use pathway** on the south side of 19th Avenue between Kingsway and Mary Avenue to provide a safe walking and cycling connection for local residents. Curbside parking will be impacted due to limited available space.
- 2** One-way **protected bike lanes** on both sides of Southpoint Drive, providing a direct connection to BC Parkway and the Southeast Bikeway.
- 3** **Neighbourhood bikeways** where cyclists and drivers share the road. Traffic and speed management measures such as speed cushions, pavement markings and signage will be installed with safety improvements at key intersections.

EDMONDS TOWN CENTRE CYCLING NETWORK



LEGEND

- Regional Bikeway Network
- Phase 1 Cycling Network
- Phase 2 Cycling Network
- School
- Edmonds
- Existing Cycling Network
- Proposed Cycling Connection
- Long-Term Cycling Network
- Park

What do you think of the proposed corridor improvements? Leave us a note!

Improving Regional Connections

The City and TransLink are looking to improve cycling connections from Edmonds SkyTrain Station and the BC Parkway to the rest of the Edmonds community. Please answer the following question to help us design the facility.

If you currently cycle along 18th Avenue, or intend to cycle this corridor after improvements have been made, which cycling connection is more important to you?

Place a dot sticker on the cycling connection that is more important to you.

Access to the SkyTrain station and having bike parking available at the station

Access to the SkyTrain station and being able to bring bikes onboard the SkyTrain

Regional connectivity via the BC Parkway or Byrne Creek Urban Trail

Unsure / No Opinion



TIMELINE

- Data collection and information gathering**
winter 2022/2023
- Phase 1 conceptual design**
winter 2023
- Phase 1 detailed design and rapid implementation**
spring 2023
- Phase 1 pilot period and public engagement**
spring/summer 2023
- Phase 1 pilot conclusion and design updates**
fall/winter 2023/2024

WE ARE HERE
Phase 2 detailed design and rapid implementation
winter/spring 2024

- Phase 2 pilot period and public engagement**
spring/summer 2024
- Phase 2 pilot conclusion and design updates**
summer 2024

What's Next?

- Phase 2 corridors will be constructed in early summer 2024 and the Phase 2 pilot will run until fall 2024. Community members are encouraged to share their feedback with the project team.
- The project team will consider design modifications where feasible based on what we hear from the community and ongoing monitoring/data collection.



Visit our project page to complete the Phase 2 pre-implementation survey.